

MONTHLY MEMBERSHIP PROGRESS REPORT

District 14 J

Results as of: 5/31/2025

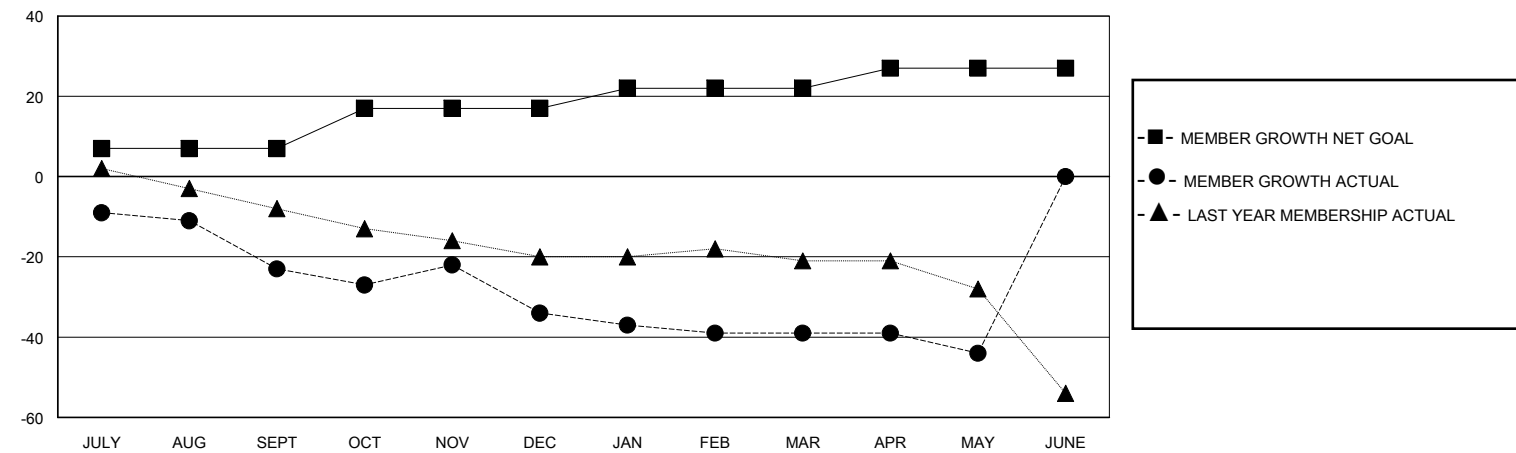
GMT: LOCATION PENNSYLVANIA GMT CA

| Clubs | | | | Members | | | |
|-----------------------|---------------|-----------|---------------|-----------------------|------------------------|----------------------|--|
| RESULTS FOR 2024-2025 | | | | RESULTS FOR 2024-2025 | | | |
| QUARTER | NEW CLUB GOAL | NEW CLUBS | DROPPED CLUBS | QUARTER | MEMBER GROWTH NET GOAL | MEMBER GROWTH ACTUAL | DROPPED MEMBERS ACTUAL (including transfers) |
| JULY/AUG/SEPT | 0 | 0 | 1 | JULY/AUG/SEPT | 7 | 27 | 28 |
| OCT/NOV/DEC | 1 | 0 | 0 | OCT/NOV/DEC | 10 | 19 | 27 |
| JAN/FEB/MAR | 0 | 0 | 0 | JAN/FEB/MAR | 5 | 7 | 12 |
| APR/MAY/JUNE | 0 | 0 | 0 | APR/MAY/JUNE | 5 | 6 | 10 |

GOALS AND ACTUAL NEW CLUBS CUMULATIVE



GOALS AND ACTUAL MEMBERS CUMULATIVE



| | | |
|--|---|--|
| DROPPED CLUBS: 1 | 16 CLUBS OF 27 ADDED 1 OR MORE NEW MEMBERS | <u>GENDER DISTRIBUTION</u> MALE 437 (63.43%) FEMALE 252 (36.57%) |
| <u>DROPPED MEMBERS</u> DECEASED 9 CLUB CANCELLED 9 OTHER 59 TOTAL 77 | CLICK HERE FOR CUMULATIVE MEMBERSHIP DATA | TOTAL FAMILY UNIT MEMBERS 214 FAMILY MEMBERS PAYING HALF DUES 111 |